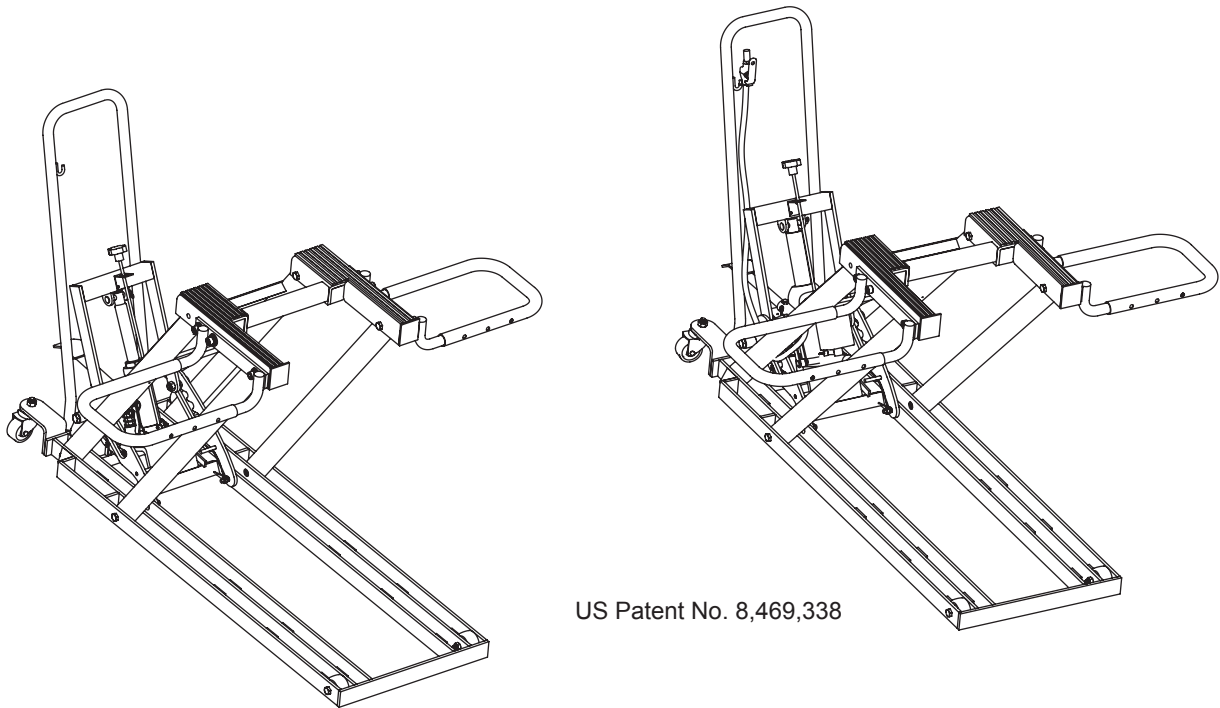




# Mower Lift

## Operating Instructions & Parts Manual

Model	Capacity
T-5500	500 lbs.(227 kg) (wheel brackets)
T-5501	750 lbs. (340 kg) (platform)



This is the safety alert symbol. It is used to alert you to potential personal injury hazards. Obey all safety messages that follow this symbol to avoid possible injury or death.

**Shinn Fu (Australia) PTY. LTD.**  
15 Viewtech Place, Rowville, Victoria 3178, Australia

## SAFETY AND GENERAL INFORMATION

**Save these instructions.** For your safety, read, understand, and follow the information provided with and on this lift. The owner and operator of this equipment shall have an understanding of this lift and its safe operating procedures before attempting to use. The owner and operator shall be aware that use and repair of this product may require special skills and knowledge. Instructions and safety information shall be conveyed in the operator's native language before use of this lift is authorized. If any doubt exists as to the safe and proper use of this lift, remove from service immediately. **Inspect before each use.** Do not use if broken, bent, cracked or damaged parts are noted. Any lift that appears damaged in any way, or operates abnormally shall be removed from service immediately. If the lift has been or is suspected to have been subjected to a shock load (a load dropped suddenly, unexpectedly upon it), immediately discontinue use until it has been examined by a Pro-Lift authorized service center. It is recommended that an annual inspection be done by qualified personnel. Labels and Operator's Manuals are available from the manufacturer (see Replacement Parts, pg. 6 & 7).

## PRODUCT DESCRIPTION

The Pro-Lift Mower Lift is specifically designed to lift, and support, up to rated capacity loads consisting of a single riding lawn mower whose frame is compatible with the lifting platform. Incompatibility is evident when the loaded mower wobbles, feels unstable, and/or does not sit securely on the lift platform. This product is NOT suitable for lifting, leveling and/or positioning automobiles, trucks, SUV's or conveyances other than those specifically listed and approved above. This product is NOT suitable for lifting, leveling and/or positioning houses, construction trailers and dwellings in general. This product does not contain independent lifting devices, but is designed to be permanently assembled. The Hydraulic Unit is not to be used independently of the lift.

## SPECIFICATIONS

Base Size (L x W)	Lift Surface	Capacity	Compatible Wheel Track	Min. Height	Max. Height
136 cm x 43cm	Platform	227 kg	N/A	11.5 cm	78.7 cm
	Wheel Bracket	340 kg	141 cm outside span		68.5 cm

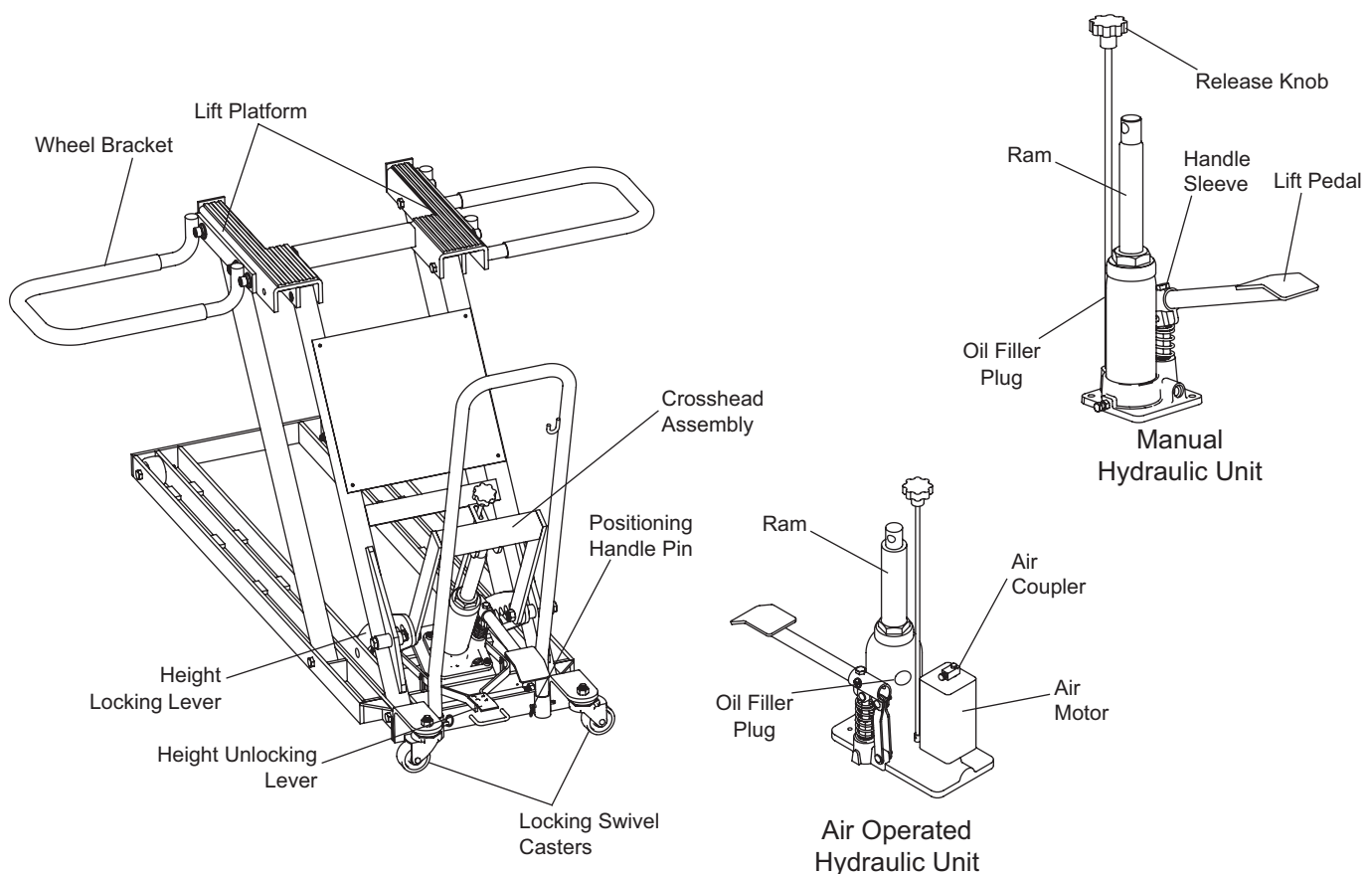



Figure 1 - Model T-5500/T-5501 Nomenclature

**PREPARATION (ref. Fig. 1)**

1. Before using this product, read the operator's manual completely and familiarize yourself thoroughly with the product, its components and recognize the hazards associated with its use.
2. To familiarize yourself with basic operation, place Hydraulic Unit in an upright, level position then turn Release Knob:
  - a. Clockwise until firm resistance is felt to further turning. This is the 'CLOSED' release valve position used to raise the ram plunger.
  - b. Counter-clockwise, but no more than 1/2 turn from the closed position. This is the 'OPEN' release valve

- position used to lower the ram plunger.
3. With Ram fully retracted and release valve closed, pump Lift Pedal. If Ram responds immediately, bottle jack is ready for use. If not, follow Bleeding/Venting Trapped Air procedure, pg. 4. Ensure the oil level is just below the oil filler hole.
4. For Model T-5501: Pour a teaspoon of good quality, air tool lubricant into the air supply inlet of the lift control valve. Connect to air supply and operate for 3 seconds to evenly distribute lubricant.

 <b>WARNING</b>
<ul style="list-style-type: none"> <li>• Study, understand and follow all instructions before operating this device.</li> <li>• Use of this product is limited to lifting, lowering and holding loads consisting of a single riding lawn mower whose lifting points are compatible with the lifting platform. Incompatibility is evident when the loaded mower wobbles, appears unstable, and/or does not securely engage the lift platform.</li> <li>• Do not exceed rated capacity.</li> <li>• Use only on hard, level surfaces.</li> <li>• Center load on lift platform.</li> <li>• When lifting the mower, center track between wheel cradles.</li> <li>• Immediately after lifting load, ensure Height Locking Lever is engaged.</li> <li>• Engage locking caster mechanism before working on or around loaded lift. Do not move or dolly load supported by this device.</li> <li>• Restraining an incompatible load will not make the load secure and may cause unexpected loss of load.</li> <li>• Never work on, around or under a load that is not secured and stable.</li> <li>• Keep operator's and bystander's head, hands and feet away from lift arms when raising and lowering.</li> <li>• No alterations shall be made to this product.</li> <li>• Failure to heed this warning may result in personal injury and/or property damage.</li> </ul>

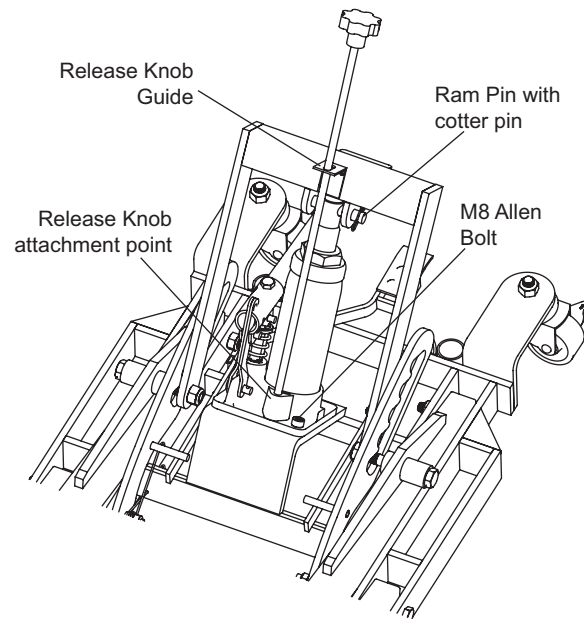


Figure 2 - Hydraulic Unit assembly

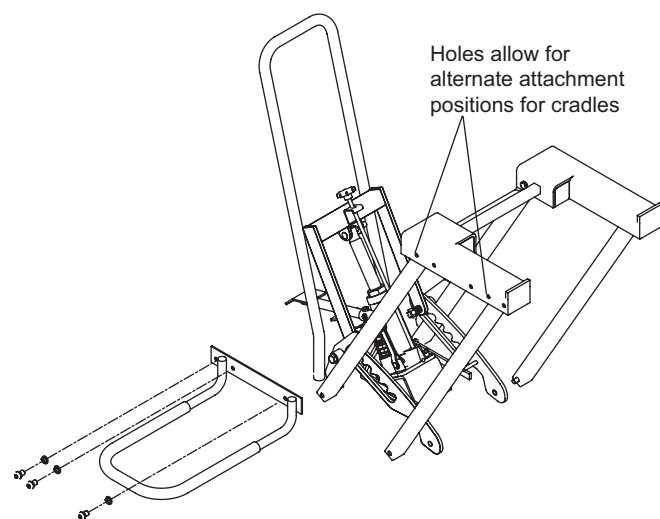


Figure 3 - Wheel Cradle assembly

## PREPARATION (cont.)

**NOTICE:** The T-5501 is equipped with a 1/4" NPT air coupler. If installing a different air coupler, ensure thread tape or compound is used when servicing connections. To ensure dependable, trouble free operation an inline air dryer and oiler is recommended.

5. Pump mechanism should operate smoothly before putting jack into service. Replace worn or damaged parts and assemblies with Pro-Lift authorized replacement parts only.

### Bleeding/Venting Trapped Air

With the Release Knob in the OPEN position (step 3b, pg. 3) and Ram fully lowered, locate and remove the oil filler screw. As screw is removed, pressurized air may be heard escaping from the reservoir.

**CAUTION:** Reservoir may be under pressure and hydraulic oil may be expelled.

This means trapped air has been successfully removed from the system. With Lift Pedal in the sleeve, pump 6 to 8 full strokes. This will help release any pressurized air still trapped within the reservoir. Oil level should be even with the bottom of the oil filler hole. Reinstall the oil filler plug/screw.

## ASSEMBLY

1. Install Hydraulic Unit on receiver and secure with provided M8 x 1.25 bolts (ref. Figure 2).
2. Insert Ram pin through Ram and Ram brackets on crosshead assembly, then install cotter pin.
3. Insert Release Knob through Release Knob guide and attach to Hydraulic Unit with screw and nut provided.
4. Insert Lift Pedal into Sleeve and attach with supplied bolt.
5. Install Positioning Handle into frame and secure using the provided pins (2).
6. Attach two Wheel Brackets to sides of Lift Platform (ref. Figure 3).
7. After assembly, ensure that lift rolls, lifts and locks, and that pump operates smoothly before putting into service. Familiarize yourself with how Height Locking Lever, Lift Pedal, and the Height Unlocking Lever operate prior to loading lift. Replace worn or damaged parts and assemblies with authorized replacement parts only (ref. Replacement Parts, pg. 6). Lubricate as instructed in Maintenance Section.

## OPERATION

1. Adjust Wheel Bracket width for mower track.
2. Drive mower onto Wheel Brackets.

**WARNING:** Use only on hard, level surfaces capable of sustaining rated capacity loads.

3. Leave mower transmission in neutral, close Hydraulic Release Valve and carefully pump jack until mower reaches desired height. Final height must correspond with the locking teeth on the Height Locking Lever.
4. Carefully turn the Release Knob counterclockwise until the Lift Platform engages the Height Locking Lever, then close the Release Knob by turning it fully clockwise. Do not work around or under load unless Height Locking Lever is properly engaged.
5. Secure the mower by setting the parking brake, putting transmission in gear and chocking the wheels.

**CAUTION:** Clear all tools and personnel before lowering load. Only attachments and/or adapters supplied by the manufacturer shall be used with this device.

6. To lower the Lift Platform, release the mower's parking brake, place transmission in neutral and remove chocks. Pump the Lift Pedal several times to disengage the Height Locking Lever, then depress the Height Unlocking Lever pedal. Carefully turn the Release Knob counterclockwise to lower the load slowly.

## MAINTENANCE

Keep lift clean and well lubricated. Apply a couple of drops of light machine oil to all pivoting joints as needed. Thoroughly wipe up excess oil.

**NOTICE:** Use premium quality hydraulic jack oil. Avoid mixing different types of fluid and NEVER use brake fluid, turbine oil, transmission fluid, motor oil or glycerin. Improper fluid can cause failure of the jack and the potential for sudden and immediate loss of load.

### Adding oil

1. To check hydraulic oil level, unload lift, lower Lift Platform completely, then remove Hydraulic Unit from lift. Place Hydraulic Unit upright on a stable, level surface. Locate and remove Oil Filler Plug.
2. Ensure the oil level is even with the Oil Filler Plug hole. Reinstall the Oil Filler Plug, then install Hydraulic Unit onto receiver. Secure with provided bolts.

### Changing oil

For best performance and longest life, completely replace the hydraulic fluid supply at least once per year.

1. With Lift Platform fully lowered, remove Hydraulic Unit from lift. Place Hydraulic Unit upright on a stable, level surface. Remove the Oil Filler Plug.

- Lay the unit on its side and drain hydraulic fluid into a suitable container.

**NOTICE:** *Dispose of used hydraulic fluid in accordance with local environmental regulations.*

- When refilling, ensure the fluid level is even with the Oil Filler Plug hole. Reinstall the Oil Filler Plug, then install Hydraulic Unit onto receiver.

### Lubrication

A periodic coating of light lubricating oil to pivot points, axles and hinges will help to prevent rust and assure that wheels, casters and pump assemblies move freely.

### Cleaning

Check the pump piston and Ram occasionally for signs of rust or corrosion. Clean as needed and wipe with an oily cloth.

### Storage

When lift is not in use, Lift Platform should be stored in the fully retracted position.

## TROUBLESHOOTING

Symptom	Possible Causes	Corrective Action
Hydraulic Unit will not lift	<ul style="list-style-type: none"> <li>Release Valve not tightly closed</li> <li>Overload condition</li> </ul>	<ul style="list-style-type: none"> <li>Ensure Release Valve tightly closed</li> <li>Reduce overload condition</li> </ul>
Hydraulic Unit bleeds off after lift	<ul style="list-style-type: none"> <li>Release Valve not tightly closed</li> <li>Overload condition</li> </ul>	<ul style="list-style-type: none"> <li>Ensure Release Valve tightly closed</li> <li>Reduce overload condition</li> </ul>
Lifting Platform will not lower after unloading	<ul style="list-style-type: none"> <li>Reservoir overfilled</li> <li>Linkages binding</li> </ul>	<ul style="list-style-type: none"> <li>Drain fluid to proper level</li> <li>Clean and lubricate moving parts</li> </ul>
Poor lift performance	<ul style="list-style-type: none"> <li>Fluid level low</li> <li>Air trapped in system</li> </ul>	<ul style="list-style-type: none"> <li>Ensure proper fluid level</li> <li>Follow <b>Bleeding/Venting Trapped Air</b> procedure, pg. 4</li> </ul>
Will not lift to full extension	<ul style="list-style-type: none"> <li>Fluid level low</li> </ul>	<ul style="list-style-type: none"> <li>Ensure proper fluid level</li> </ul>

## T-5500 REPLACEMENT PARTS

Item	Part No.	Description	Qty
1	T-5500-1	Front Wheel Assembly	2
2	T-5500-2	Locking Swivel Caster Assembly	2
3	T-5500-3	Hydraulic Unit Assembly	1
4	T-5500-4	Lift Pedal	1
5	T-5500-5	Height Unlocking Lever	1
6	T-5500-6	Positioning Handle	1
7	T-5500-7	Height Locking Lever Springs	2
8	T-5500-8	Wheel Bracket, Left	1
9	T-5500-9	Wheel Bracket, Right	1
10	T-5500-10	Platform Pads, Rubber	2
11	T-5500-12	Release Knob	1
12	T-5500-11	Hardware Kit	-
-	T-5500-L0	Labels (not shown)	-
-	T-5500-MO	Owner's Manual	-

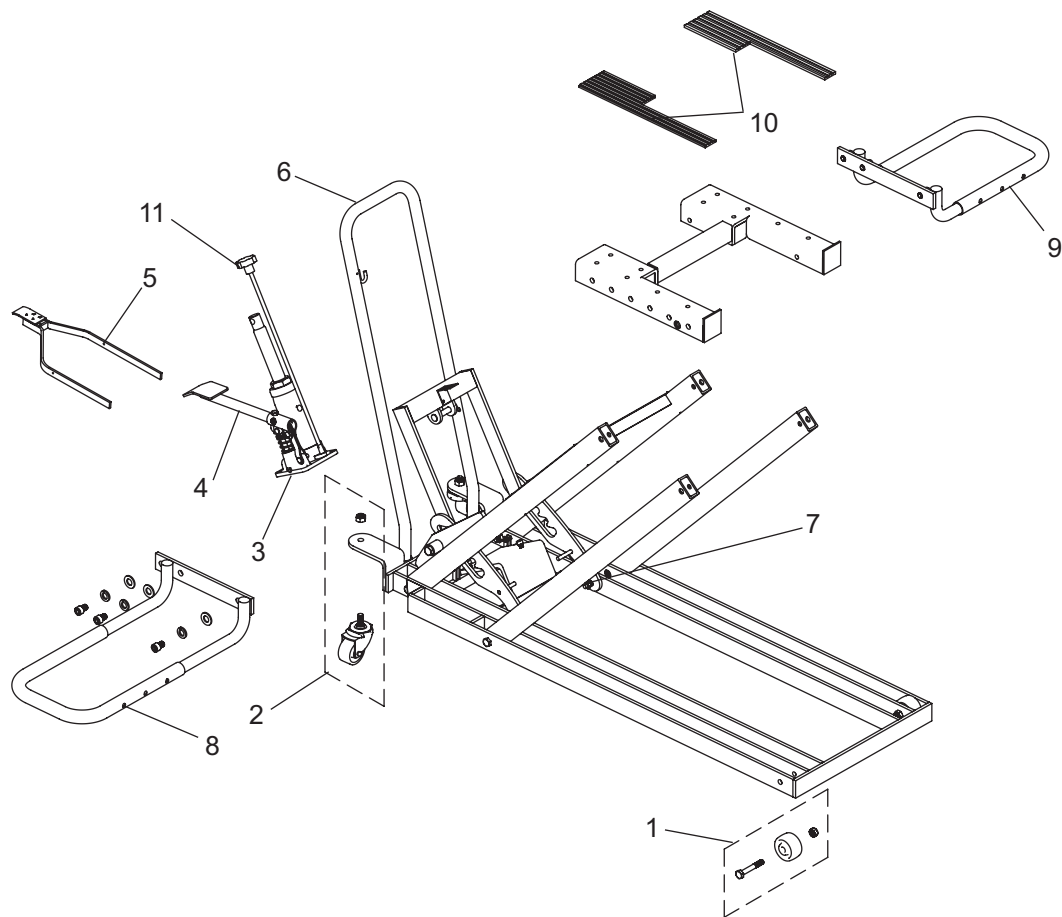


Figure 4 - Replacement Parts Illustration for Model T-5500

## T-5501 REPLACEMENT PARTS

Item	Part No.	Description	Qty
1	T-5500-1	Front Wheel Assembly	2
2	T-5500-2	Locking Swivel Caster Assembly	2
3	T-5501-3	Hydraulic Unit Assembly (items 4, 11 and 12 not included)	1
4	T-5500-4	Lift Pedal	1
5	T-5500-5	Height Unlocking Lever	1
6	T-5500-6	Positioning Handle	1
7	T-5500-7	Height Locking Lever Springs	2
8	T-5500-8	Wheel Bracket, Left	1
9	T-5500-9	Wheel Bracket, Right	1
10	T-5500-10	Platform Pads, Rubber	2
11	T-5500-12	Release Knob	1
12	T-5501-13	Air Hose	1
13	T-5501-14	Air Motor	1
14	T-5500-11	Hardware Kit	-
-	T-5500-L0	Labels (not shown)	-
-	T-5500-MO	Owner's Manual	-

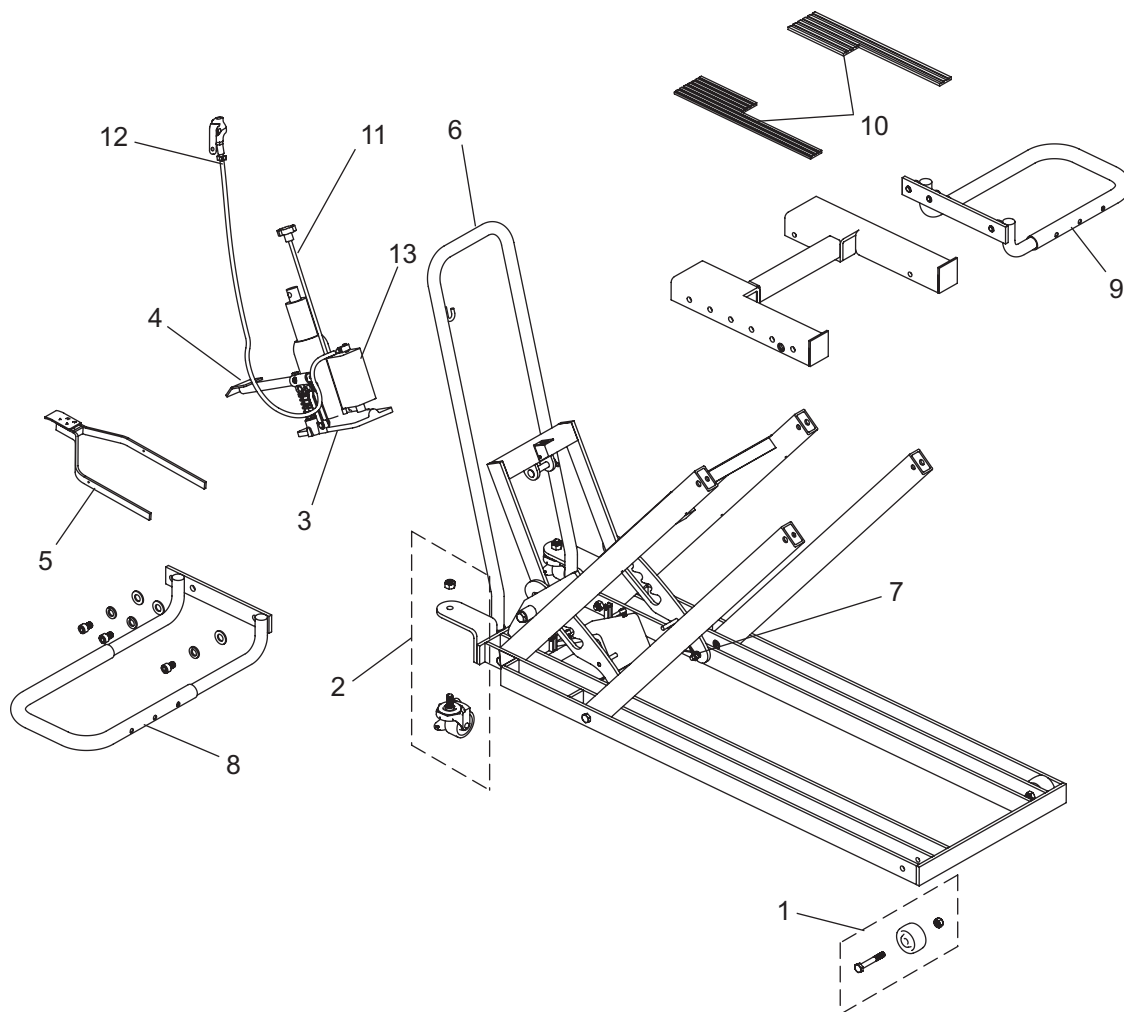


Figure 5 - Replacement Parts Illustration for Model T-5501



## WARRANTY

1. This product is covered by an express warranty for 12 months from the date of purchase by the original purchaser. Subject to the conditions of this warranty Shinn Fu Australia Pty Ltd will replace the product or provide necessary parts on the product if the product is found to be faulty within the warranty period due to defect in material or workmanship.
2. This warranty only applies to products imported by Shinn Fu Australia Pty Ltd and used within Australia. Shinn Fu products imported by other importers are specifically excluded.
3. This warranty only applies if the product has been used under normal conditions and in accordance with the User Manual and that, in the opinion of Shinn Fu Australia Pty Ltd, reasonable care has been taken of the product.
4. This warranty is void if the product has been tampered with or repaired by any unauthorised person or has been modified in any way. Any abuse, misuse or subject to normal wear and tear is not covered by this warranty.
5. If a warranty service is required the purchaser should:
  - a. Take the product to the nearest Shinn Fu Australia Pty Ltd repair agent or return it to the place of purchase, at purchaser cost.
  - b. Provide evidence of proof of purchase and the date of purchase.
  - c. Provide details of the problem encountered.
6. The benefits provided to the consumer by this warranty are in addition to other rights and remedies available to the consumer under the law.

IF YOU REQUIRE ANY ASSISTANCE REGARDING WARRANTY CONDITIONS PLEASE CONTACT THE SHINN FU AUSTRALIA PTY LTD COMPLIANCE OFFICER ON (03) 9755 8277 OR EMAIL: [sales@sfaa.com.au](mailto:sales@sfaa.com.au)

### Consumer Guarantees

Our goods come with guarantees that cannot be excluded under the Australian Consumer Law. You are entitled to a replacement or refund for a major failure and compensation for any other reasonably foreseeable loss or damage. You are also entitled to have the goods repaired or replaced if the goods fail to be of acceptable quality and the failure does not amount to a major failure.



Imported by  
**SHINN FU AUSTRALIA PTY LTD**  
15 Viewtech Place, Rowville, Victoria, Australia 3178